

# Crossing Puzzle

Starting with the yellow square and moving in the direction of the arrows, colour the 'crossing' words below. Use a different colour for each one.



→

P	E	D	E	S	T	R	I	A	N	R
G	E	J	U	N	C	T	I	O	N	E
D	R	O	A	D	Z	E	B	R	L	F
I	Y	N	G	R	O	U	N	A	O	U
R	S	I	E	D	C	A	D	R	L	G
B	U	S	K	B		R	A	O	L	E
T	B	S	R	R	E	K	B	A	I	C
O	N	O	A	P	T	U	O	D	P	L
O	A	R	C	S	K	R	O	W	O	E
F	C	I	L	E	P	N	A	M	P	A
Y	A	W	B	U	S	D	A	O	R	R

↑

- ↓
- 1 PEDESTRIAN REFUGE
- 2 CLEAR ROAD
- 3 ROUNDABOUT
- 4 FOOTBRIDGE
- 5 ROADWORKS
- 6 LOLLIPOP MAN
- 7 PARKED CAR
- 8 ZEBRA
- 9 SUBWAY
- 10 JUNCTION
- 11 CROSSING
- 12 BUSY ROAD
- 13 PELICAN
- 14 KERB
- 🚧



Be SAFE  
Be SEEN

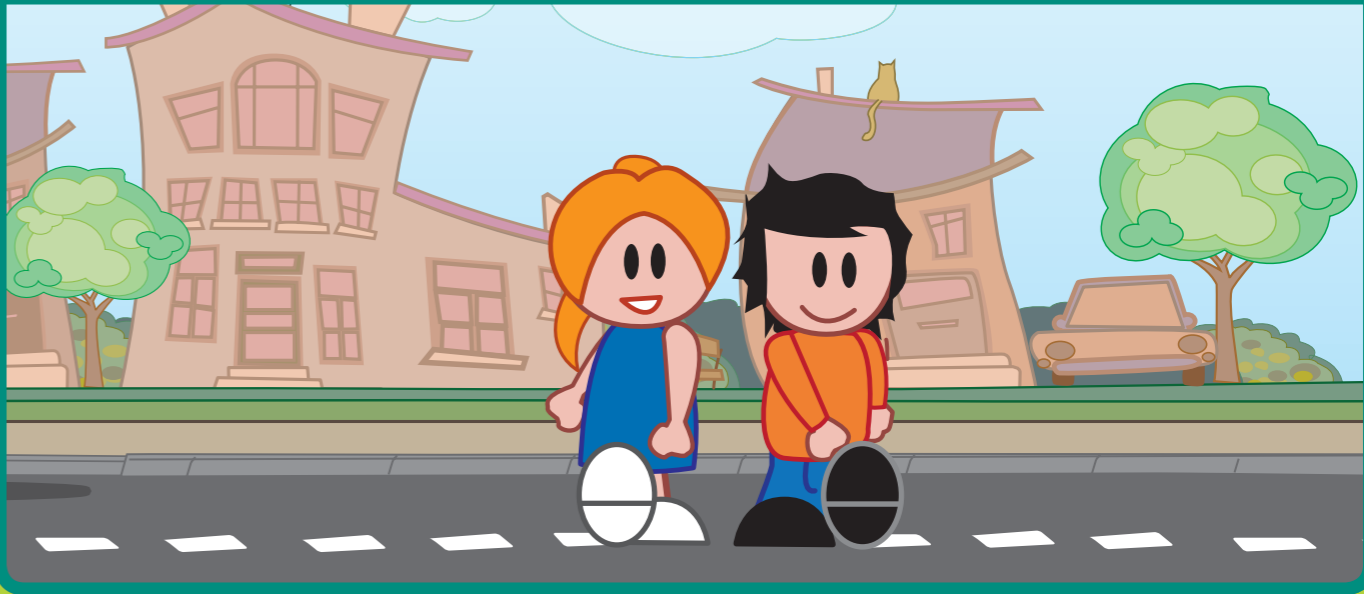
Always wear high visibility clothing when you're out and about so road users can see you clearly.

# Pedestrian Training

Look all around for traffic and listen



When there is no traffic near walk straight across



Turn over for a fun colouring-in poster!

# Find a SAFE way

