

Answer the questions

to test your Crossing Knowledge

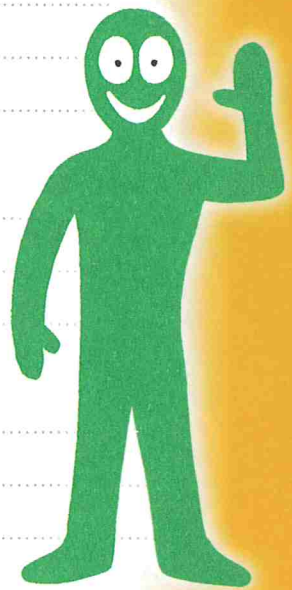
1 What do you look for when you approach a Pelican / Puffin crossing?

2 When the red man is lit up, where do you wait and why?

3 Is it always safe to cross when the green man lights up? Why?

4 How and where do you cross the road?

5 What do you do if the green man is flashing?



Zebra Crossing

1 Where do you wait before you cross?

2 What do you need to happen before you can cross safely?

3 What should you always do as you cross? Why?

