

THE DANGER SIGNS

Road signs cannot warn you about all of the dangers on the roads.

Look out for the clues that tell you there could be danger ahead!

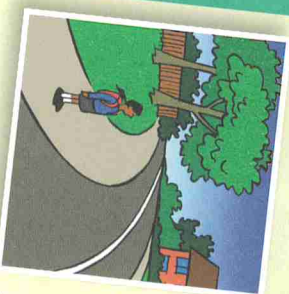
Name the danger in the numbered box above the picture and write, in the space below, why it might be dangerous.

Use the puzzle to help you.

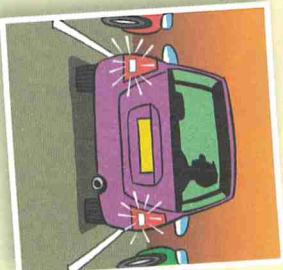
DANGER
1



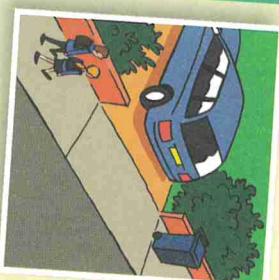
DANGER
2



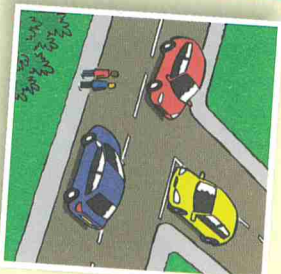
DANGER
3



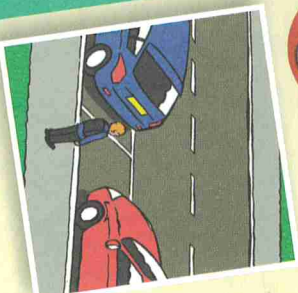
DANGER
4



DANGER
5



DANGER
6



It's a puzzle!

BEND

JUNCTION

EXHAUST FUMES

PARKED CARS

REVERSE

DRIVEWAY

Vehicles that are stationary

Two white lights on the back of the car mean it's going to...

A turn in the road

The place where two roads meet

A place for parking next to your house

The smoke that comes out of the back of a car

STEPPIN' OUT CHALLENGE



What are some of the 'danger signs' that you see outside your own home or school?